

WESTORIA



2018 PARADE 616 WENTWORTH DR



SQUARE FOOT: 2,891 FINISHED

Main Floor: 1,864SQ.FT. Lower Level: 1,027 SQ.FT. Garage: 537 SQ.FT.

3 Bedrooms 3 Bath

Features:

- Harlan Custom Cabinets .
- 11ft. Foyer with Plant Shelf.
- Master Bath with Ceramic Shower.
- Hardwood Floor in Kitchen and Foyer.
- Quartz Countertops in Kitchen.
- Stainless Steel Appliances.
- Guest Bedroom
- Zero Clearance Entry.
- Lower Level with:
Bedroom, Bath, and Family Rm.

Additional Features:

- Stone and Shake Siding.
- Vinyl Deck and Railing.
- Andersen Windows.
- Therma-Tru Fiberglass Entry Door.
- Wayne Dalton Cottage Style Overhead Door.
- LED Lighting.
- 36" Interior doors.

Home Price: \$364,400
Landscape: \$ 9,600
Lot 61: \$ 38,900
Total Home Price: \$412,900

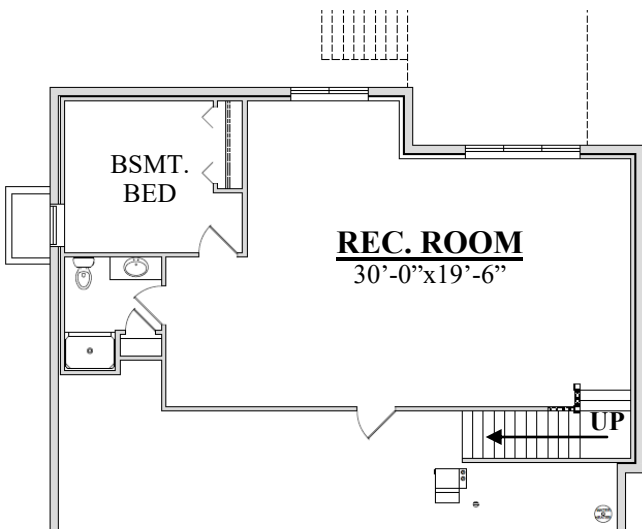
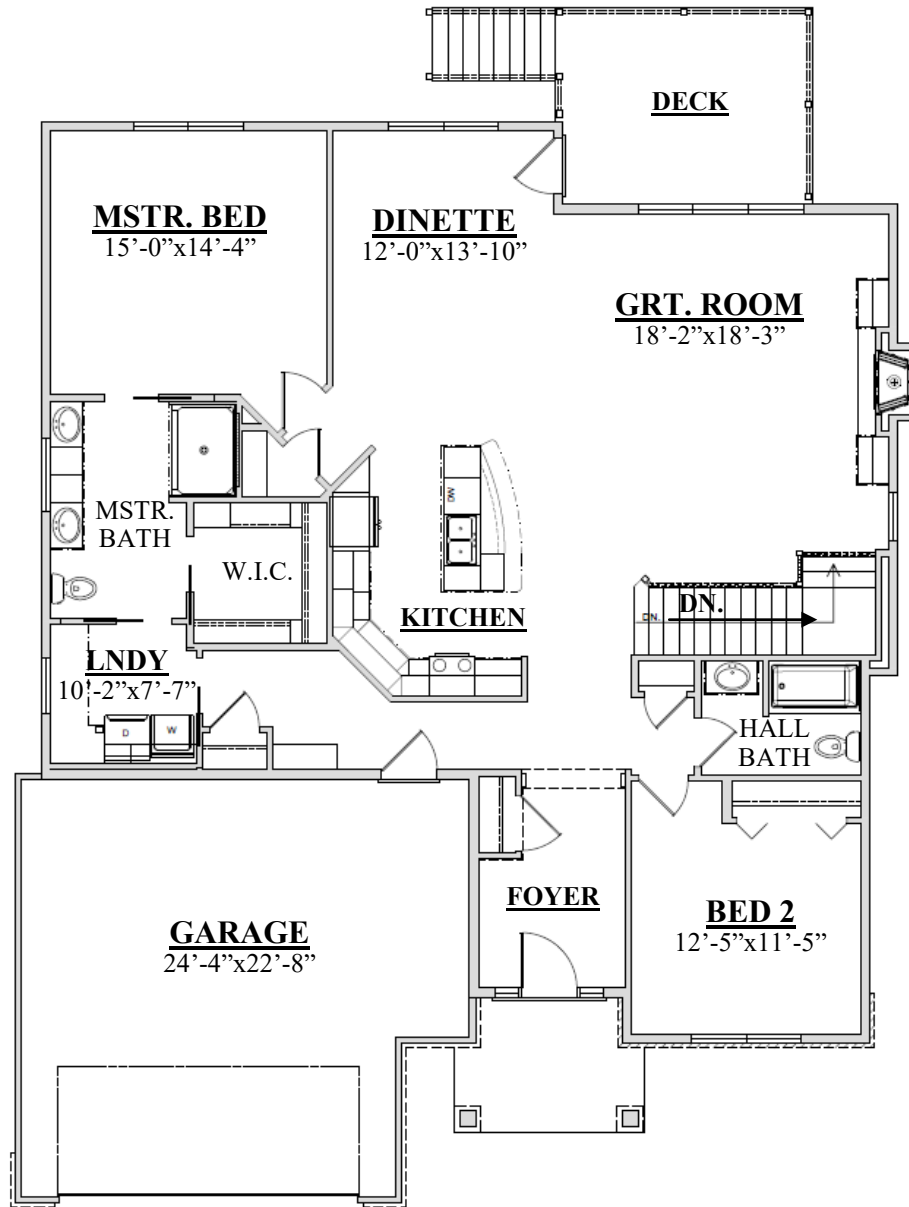


DESIGN AND QUALITY - A TRADITION
2523 MESSICK DRIVE, GOSHEN, IN 46526
SALES - (574)-534-2706
WWW.SCHROCKHOMES.COM

SQUARE FOOT: 2,891 FINISHED

Main Floor: 1,864SQ.FT. Lower Level: 1,027 SQ.FT. Garage: 537 SQ.FT.

3 Bedrooms 3 Bath



DESIGN AND QUALITY - A TRADITION
2523 MESSICK DRIVE, GOSHEN, IN 46526
SALES - (574)-534-2706
WWW.SCHROCKHOMES.COM