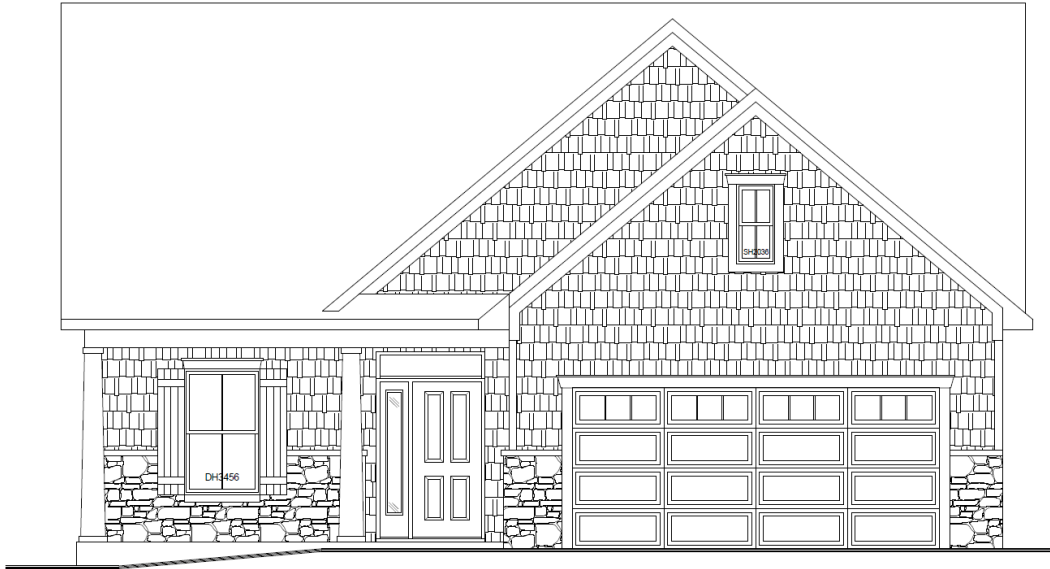


WESTORIA



THE TUSCANY VILLA 706 WINSLOW DR



SQUARE FOOTAGE: 1,523

Main Floor: 1,523 SQ.FT. Lower Level: Unfinished Garage: 491 SQ.FT.
2 Bedrooms 2 Bath

Features:

Main Floor:

- 9ft Ceiling Throughout
- LED Lighting.
- 36" Exterior and Interior Doors
- Zero Clearance Entry
- Kountry Wood Cabinets
- Large Kitchen Island
- Laundry Connected to Master Closet

Lower Level:

- Rough in Plumbing for Future Bath
- Egress and Daylight Windows

Additional Features:

Exterior:

- Stone and Shake Siding.
- Vinyl Deck and Railing.
- Andersen Tilt Wash Windows.
- Therma-Tru Fiberglass Entry Door.
- Wayne Dalton Cottage Style Overhead Door.

Home Price: \$ 225,700

Landscape: \$ 9,535

Lot 3B: \$ 29,900

Total Home Price: \$ 265,135



DESIGN AND QUALITY - A TRADITION

2523 MESSICK DRIVE, GOSHEN, IN 46526
SALES - (574)-534-2706
WWW.SCHROCKHOMES.COM

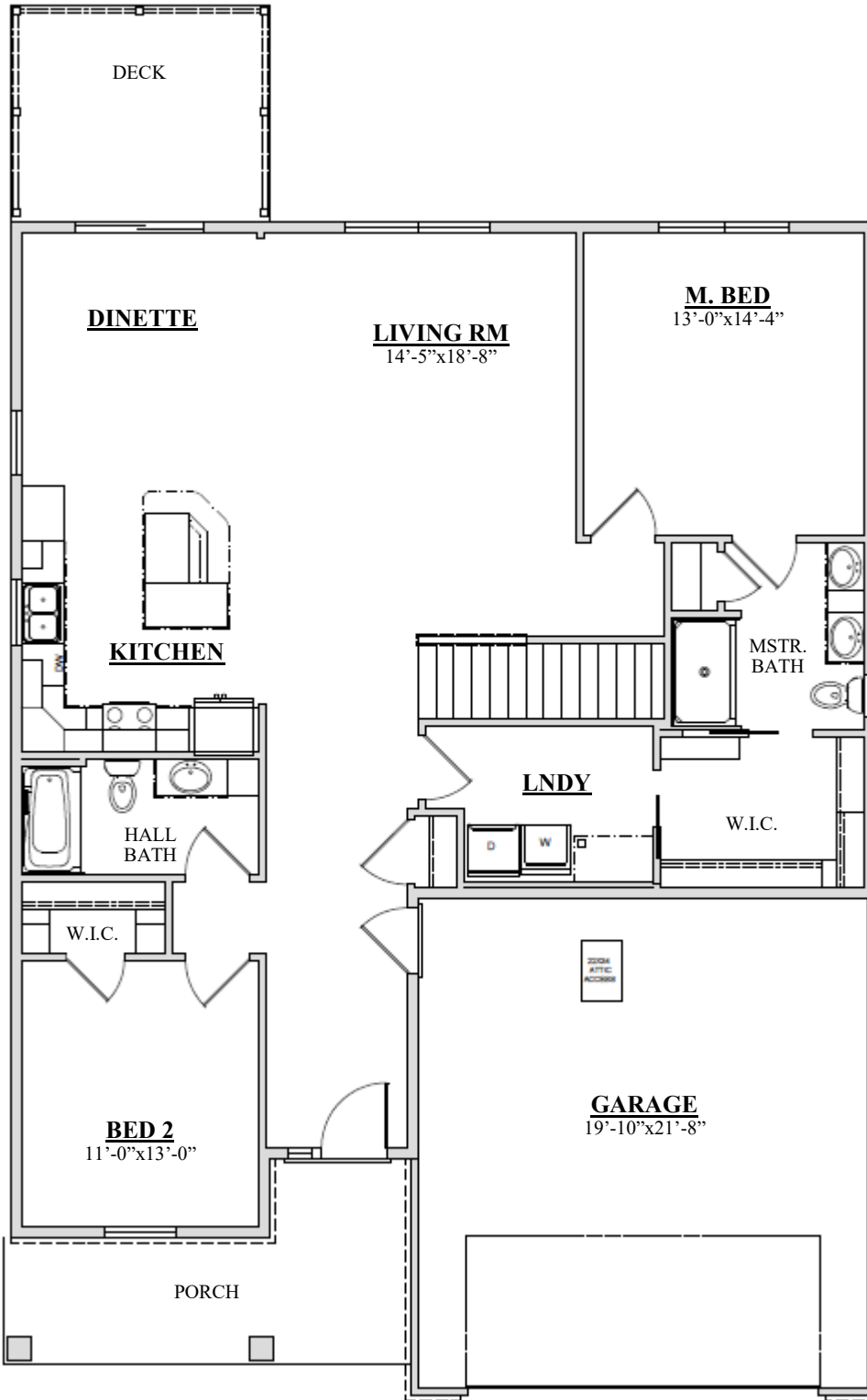
SQUARE FOOTAGE: 1,523

Main Floor: 1,52 SQ.FT.

Lower Level: Unfinished

Garage: 491 SQ.FT.

2 Bedrooms 2 Bath



DESIGN AND QUALITY - A TRADITION
2523 MESSICK DRIVE, GOSHEN, IN 46526
SALES - (574)-534-2706
WWW.SCHROCKHOMES.COM